

Dashboard

Custom (5/06/2020)

All Locations

Lynx Fruit and Veg

Updated 23/06/2020 3:11PM

Sales Total

\$6,823.97

Gross Profit

\$2,760.21

Profit Margin

39.41%

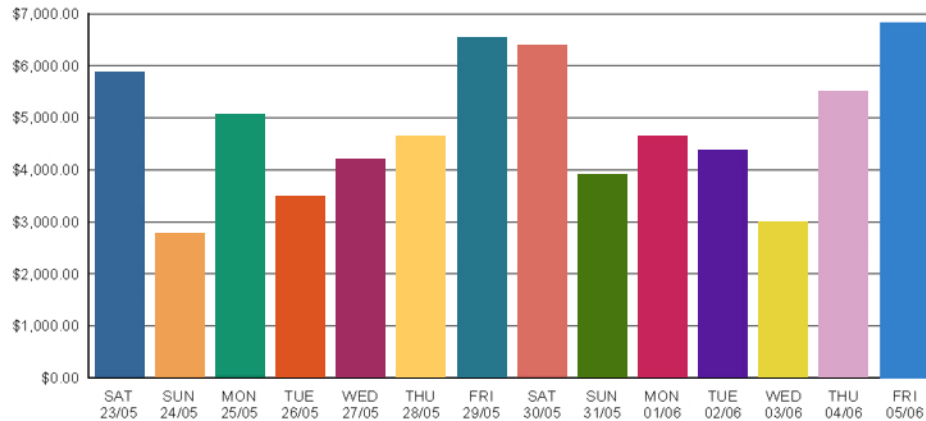
Transactions

799

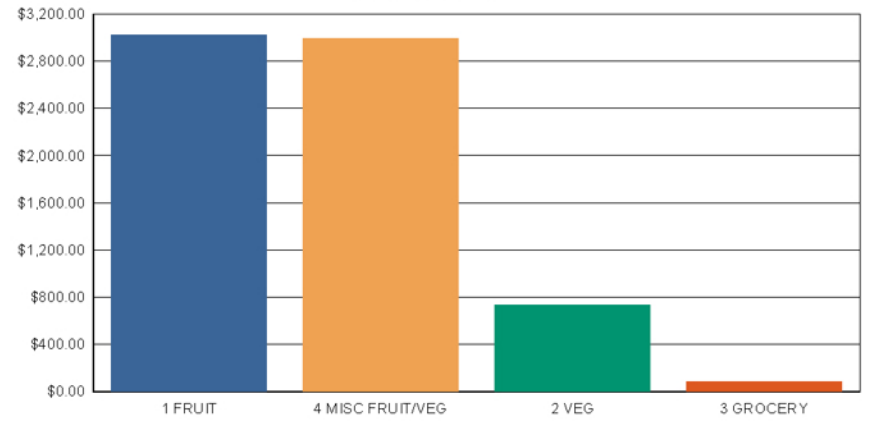
Average Sale

\$8.54

14 Day Sales



Group Sales



Voids

\$0.00

Refunds

-\$33.71

Corrections

-\$248.73

No Sales

21

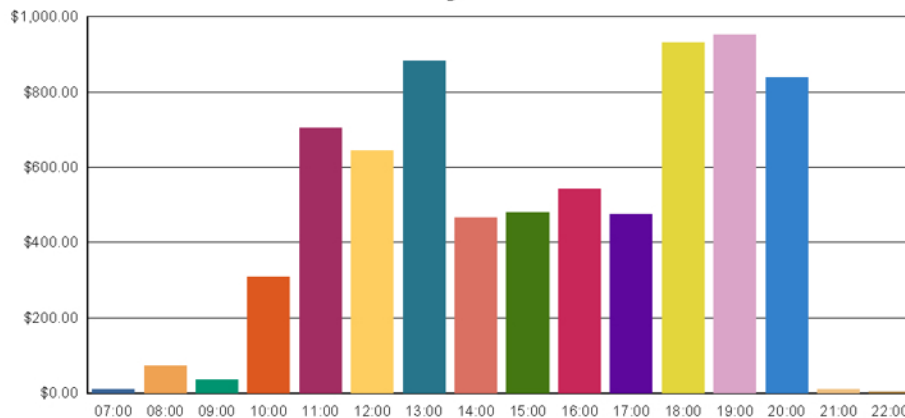
Discounts

-\$2.49

Complimentary

\$0.00

Hourly Sales



Top Sellers

Description	Quantity	Amount	Profit
MISC P/PK	312.000	\$1,154.75	\$462.11
MISC FRUIT EACH	239.000	\$846.15	\$339.47
MISC VEG EACH	177.000	\$369.32	\$149.84
MISC FRUIT KG	109.480	\$353.46	\$145.44
MISC VEG KG	105.720	\$223.27	\$91.12
BLUEBERRIES 4 FOR \$6	92.000	\$378.00	\$102.00

POS Terminals Report

Last Month (1/06/2020 - 30/06/2020)

All Locations > All Terminals

Lynx Fruit and Veg

Page 1 of 1

Printed 13/07/2020 12:13PM

Code	Description	Total Group Sales		
		Ex. Tax	Inc. Tax	% of Total
1	Counter 1	\$32,750.60	\$36,025.60	39.27%
2	Counter 2	\$32,590.92	\$35,849.94	39.08%
3	Counter 3	\$13,405.72	\$14,746.24	16.07%
4	Counter 4	\$4,651.00	\$5,116.08	5.58%
GRAND TOTAL		\$83,398.24	\$91,737.86	

Transaction Report

Lynx Fruit and Veg

Month to Date (1/06/2020 - 12/06/2020)

Page 1 of 1

All Locations > All Terminals

Printed 12/06/2020 3:51PM

Description	Quantity	Amount	% of Total	Average	Avg/Tran
Major Groups					
	4,244	\$11,389.15	12.41%	\$2.68	\$1.57
	24,728	\$80,348.71	87.59%	\$3.25	\$11.07
	28,972	\$91,737.86			\$12.64
Taxable Subtotals					
TAXABLE		\$3.64	100.00%		\$0.00
		\$3.64			\$0.00
Tax Amounts					
GST		\$0.36	100.00%		\$0.00
		\$0.36			\$0.00
Counts					
NO SALE	270				
Transaction Count	7,529				
	7,799				
Functions					
REFUND	27	-\$110.97	4.88%	-\$4.11	-\$0.02
CORRECTED	1,067	-\$5,821.74	255.85%	-\$5.46	-\$0.80
10% DISCOUNT	6	-\$17.23	0.76%	-\$2.87	\$0.00
30% STAFF DISC	19	-\$120.78	5.31%	-\$6.36	-\$0.02
TRANSACTION VOID	530	\$3,795.25	-166.79%	\$7.16	\$0.52
	1,649	-\$2,275.47			-\$0.31
Media Tendered					
CASH	3,137	\$27,221.77	29.71%	\$8.68	\$3.75
EFTPOS	3,567	\$64,389.69	70.29%	\$18.05	\$8.87
	6,704	\$91,611.46			\$12.62
Media Sales					
CASH	3,137	\$27,218.18	29.71%	\$8.68	\$3.75
EFTPOS	3,567	\$64,384.77	70.29%	\$18.05	\$8.87
	6,704	\$91,602.95			\$12.62
Other					
ROUND DIFFER		\$11.10	100.00%		\$0.00
		\$11.10			\$0.00
Sales Types					
Sales Type 1		\$92,269.64	100.00%		\$12.71
		\$92,269.64			\$12.71

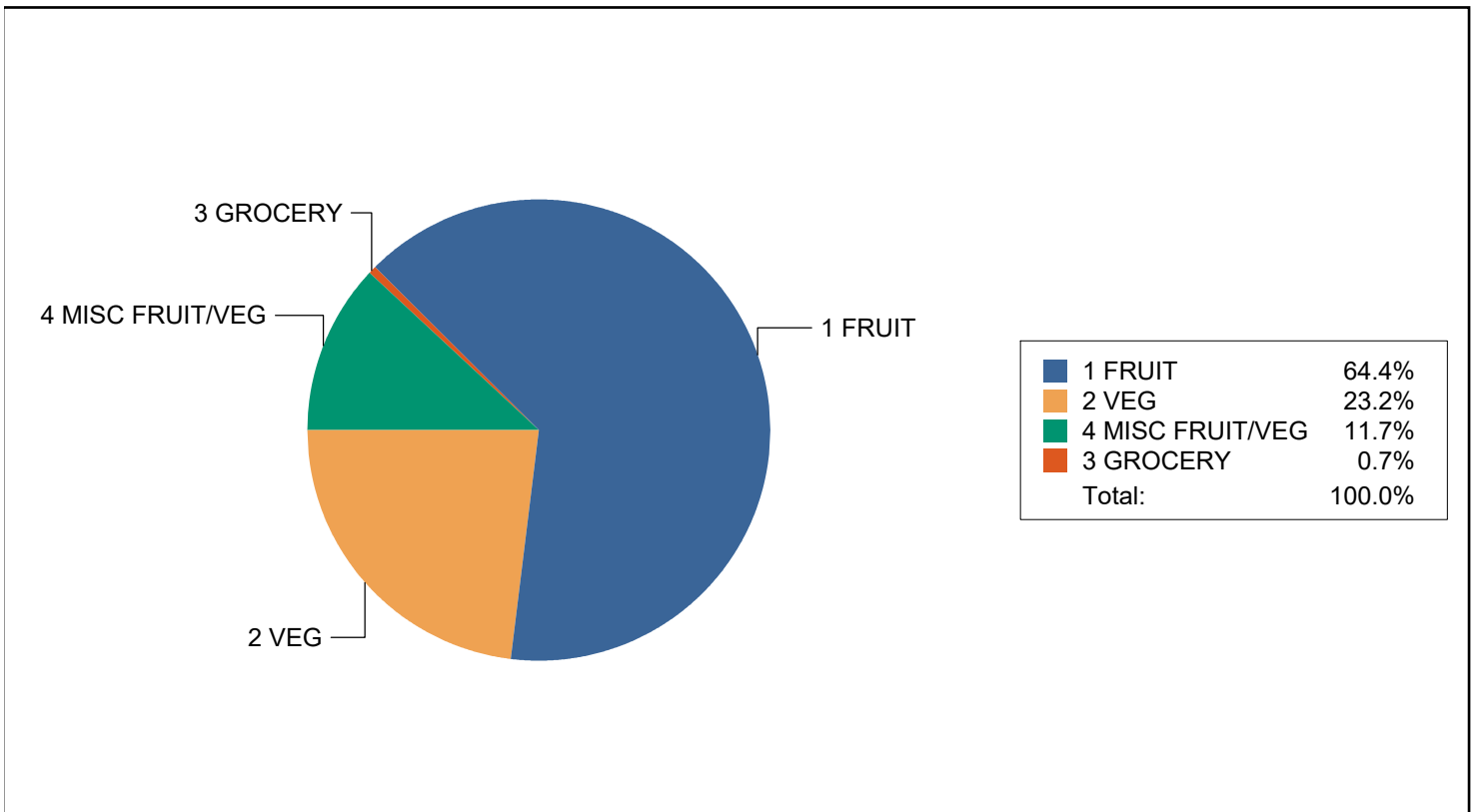
Group Sales Report

Month to Date (1/06/2020 - 12/06/2020)

All Locations > All Terminals > All Major Groups > All Groups

Printed 12/06/2020 3:54PM

Code	Description	Sales		
		Quantity	Amount	% of Total
1	FRUIT	15,504.045	\$59,094.81	64.42%
2	VEG	9,225.000	\$21,257.90	23.17%
3	GROCERY	140.000	\$615.12	0.67%
4	MISC FRUIT/VEG	4,102.545	\$10,770.03	11.74%
GRAND TOTAL		28,971.590	\$91,737.86	



Item Sales Report

Last Week (8/06/2020 - 14/06/2020)

All Suppliers > All Locations > All Terminals > All Major Groups > All Groups > Items: 45 to 182

Item Code	Description	Sales			Gross Profit	
		Quantity	Amount	% of Total	Amount	% Margin
45	BANANA LADY FINGER	201.890	\$621.46	4.66%	\$25.88	4.16%
46	BLUEBERRIES EACH	327.000	\$662.73	4.97%	\$319.38	48.19%
47	BLUEBERRIES 4 FOR \$6	1,351.000	\$7,118.00	53.42%	\$2,321.95	32.62%
48	BLACKBERRIES	13.000	\$64.87	0.49%	\$26.52	40.88%
60	BROCCOLINI SINGLE	68.000	\$203.32	1.53%	\$81.60	40.13%
61	BROCCOLI	214.065	\$637.98	4.79%	\$263.36	41.28%
62	BEANS	12.895	\$127.51	0.96%	\$50.77	39.82%
63	BUTTER BEANS	2.000	\$7.98	0.06%	\$3.18	39.85%
64	BEAN SPROUTS	7.000	\$13.93	0.10%	\$6.23	44.72%
67	BEETROOT LOOSE	10.695	\$42.60	0.32%	\$17.36	40.75%
68	1KG BEETROOT BAG EACH	45.000	\$110.55	0.83%	\$61.95	56.04%
69	BEETROOT BAG 2 FOR	3.000	\$12.00	0.09%	\$4.86	40.50%
70	BRUSSEL SPROUTS PACK	4.000	\$11.96	0.09%	\$4.76	39.80%
71	BOK CHOI	5.000	\$4.95	0.04%	\$2.00	40.40%
72	BROCCOLI PACK EACH	127.000	\$316.23	2.37%	\$106.68	33.73%
73	BROCCOLI PACK 2 FOR 4	98.000	\$392.00	2.94%	\$155.82	39.75%
75	BEETROOT BUNCHES	16.000	\$47.84	0.36%	\$19.04	39.80%
90	COCOBELLA 1L 2 FOR \$6	16.000	\$96.00	0.72%	\$40.00	41.67%
130	CAPSICUM RED	167.425	\$459.56	3.45%	\$158.19	34.42%
131	CAPSICUM GREEN	29.050	\$144.57	1.08%	\$58.86	40.71%
132	CAPSICUM TRAY	70.000	\$209.30	1.57%	\$84.70	40.47%
133	CAPSICUM TRAY 2 \$4	65.000	\$260.00	1.95%	\$104.00	40.00%
142	CABBAGE GREEN EACH	18.000	\$71.82	0.54%	\$38.52	53.63%
144	CABBAGE GREEN 1/2	8.000	\$15.93	0.12%	\$7.13	44.76%
145	CABBAGE GREEN 1/4	2.000	\$3.00	0.02%	\$1.20	40.00%
146	CABBAGE RED	10.000	\$33.90	0.25%	\$12.90	38.05%
147	CABBAGE 1/2 RED	9.000	\$17.91	0.13%	\$8.19	45.73%
148	CHINESE WOMBOK EACH	58.000	\$115.42	0.87%	\$54.52	47.24%
149	CHINESE WOMBOK 1/2	6.000	\$5.94	0.04%	\$2.46	41.41%
152	SUGARLOAF CABBAGE	18.000	\$35.82	0.27%	\$25.92	72.36%
153	SUGARLOAF CABBAGE HALF	1.000	\$1.00	0.01%	\$0.73	73.00%
174	CARROTS KG	85.255	\$168.87	1.27%	\$75.09	44.47%
175	DUTCH CARROTS	3.000	\$10.50	0.08%	\$4.05	38.57%
176	CARROTS 1KG BAG	138.000	\$343.62	2.58%	\$138.00	40.16%
177	CARROTS 1KG 2 \$4	72.000	\$288.00	2.16%	\$115.20	40.00%
178	CHOKOS	3.895	\$11.61	0.09%	\$4.60	39.62%
179	CELERY	89.000	\$302.11	2.27%	\$89.40	29.59%
180	CELERY 1/2	32.000	\$63.68	0.48%	\$28.48	44.72%
181	CELERY TRAY	1.000	\$1.99	0.01%	\$0.89	44.72%
182	CORN	273.000	\$269.29	2.02%	\$119.14	44.24%
GRAND TOTAL		3,680.170	\$13,325.75		\$4,643.51	34.85%

Best Sellers Report

Last Week (8/06/2020 - 14/06/2020)

All Suppliers > All Locations > All Terminals > All Major Groups > All Groups > Items: 45 to 297

Item Code	Description	Sales			Gross Profit	
		Quantity	Amount	% of Total	Amount	% Margin
47	BLUEBERRIES 4 FOR \$6	1,351.000	\$7,118.00	37.20%	\$2,321.95	32.62%
264	600G EGGS 2 FOR	286.000	\$1,144.00	5.98%	\$457.60	40.00%
190	PAK CHOI EACH	799.000	\$790.04	4.13%	\$430.49	54.49%
188	CONT CUCUMBER	458.000	\$681.84	3.56%	\$274.22	40.22%
46	BLUEBERRIES EACH	327.000	\$662.73	3.46%	\$319.38	48.19%
61	BROCCOLI	214.065	\$637.98	3.33%	\$263.36	41.28%
45	BANANA LADY FINGER	201.890	\$621.46	3.25%	\$25.88	4.16%
196	LEB CUCUMBER PACKS	159.015	\$474.43	2.48%	\$188.20	39.67%
130	CAPSICUM RED	167.425	\$459.56	2.40%	\$158.19	34.42%
192	CAULIFLOWER	227.000	\$450.74	2.36%	\$201.04	44.60%
189	LEBANESE CUCUMBER	90.500	\$450.59	2.35%	\$179.06	39.74%
73	BROCCOLI PACK 2 FOR 4	98.000	\$392.00	2.05%	\$155.82	39.75%
184	CORN PRE PACK	94.000	\$375.06	1.96%	\$149.46	39.85%
241	ESCHALLOTS EACH	184.000	\$366.16	1.91%	\$182.16	49.75%
176	CARROTS 1KG BAG	138.000	\$343.62	1.80%	\$138.00	40.16%
72	BROCCOLI PACK EACH	127.000	\$316.23	1.65%	\$106.68	33.73%
179	CELERY	89.000	\$302.11	1.58%	\$89.40	29.59%
177	CARROTS 1KG 2 \$4	72.000	\$288.00	1.51%	\$115.20	40.00%
182	CORN	273.000	\$269.29	1.41%	\$119.14	44.24%
133	CAPSICUM TRAY 2 \$4	65.000	\$260.00	1.36%	\$104.00	40.00%
132	CAPSICUM TRAY	70.000	\$209.30	1.09%	\$84.70	40.47%
60	BROCCOLINI SINGLE	68.000	\$203.32	1.06%	\$81.60	40.13%
256	500G EGGS 2 \$4	47.000	\$188.00	0.98%	\$75.20	40.00%
174	CARROTS KG	85.255	\$168.87	0.88%	\$75.09	44.47%
131	CAPSICUM GREEN	29.050	\$144.57	0.76%	\$58.86	40.71%
195	CHOY SUM	131.000	\$129.69	0.68%	\$57.64	44.44%
62	BEANS	12.895	\$127.51	0.67%	\$50.77	39.82%
261	FREE RANGE 600G EGGS	20.000	\$119.80	0.63%	\$47.80	39.90%
148	CHINESE WOMBOK EACH	58.000	\$115.42	0.60%	\$54.52	47.24%
194	CORIANDER	58.000	\$115.42	0.60%	\$51.62	44.72%

Hourly Sales Report

Yesterday (11/06/2020)

All Locations > All Terminals

Lynx Fruit and Veg

Page 1 of 2

Printed 12/06/2020 4:02PM

	Total	00-14	15-29	30-44	45-59
6:00:00AM	1.000 \$12.74	0.000 \$0.00	0.000 \$0.00	0.000 \$0.00	1.000 \$12.74
7:00:00AM	10.000 \$74.12	0.000 \$0.00	0.000 \$0.00	1.000 \$37.28	9.000 \$36.84
8:00:00AM	24.000 \$369.26	0.000 \$0.00	6.000 \$61.08	10.000 \$174.20	8.000 \$133.98
9:00:00AM	82.000 \$1,411.90	14.000 \$232.51	19.000 \$389.28	23.000 \$388.79	26.000 \$401.32
10:00:00AM	151.000 \$1,972.09	33.000 \$473.40	33.000 \$456.22	37.000 \$445.78	48.000 \$596.69
11:00:00AM	205.000 \$2,672.46	59.000 \$818.38	46.000 \$542.05	44.000 \$526.05	56.000 \$785.98
12:00:00PM	218.000 \$3,426.60	58.000 \$826.07	70.000 \$1,118.03	47.000 \$699.70	43.000 \$782.80
1:00:00PM	246.000 \$3,569.95	59.000 \$874.48	62.000 \$873.39	62.000 \$982.91	63.000 \$839.17
2:00:00PM	210.000 \$2,904.75	69.000 \$946.79	55.000 \$694.54	44.000 \$685.90	42.000 \$577.52
3:00:00PM	155.000 \$2,317.62	40.000 \$831.83	45.000 \$569.62	35.000 \$395.08	35.000 \$521.09
4:00:00PM	170.000 \$2,173.23	32.000 \$400.47	41.000 \$513.94	42.000 \$595.46	55.000 \$663.36
5:00:00PM	119.000 \$1,635.80	29.000 \$430.90	35.000 \$524.09	27.000 \$428.40	28.000 \$252.41
6:00:00PM	92.000 \$1,234.40	26.000 \$361.91	26.000 \$311.74	22.000 \$236.65	18.000 \$324.10
7:00:00PM	72.000 \$1,239.45	20.000 \$499.93	19.000 \$242.77	14.000 \$246.07	19.000 \$250.68
8:00:00PM	40.000 \$513.70	13.000 \$134.51	8.000 \$70.70	15.000 \$258.55	4.000 \$49.94
9:00:00PM	1.000 \$0.00	1.000 \$0.00	0.000 \$0.00	0.000 \$0.00	0.000 \$0.00

GRAND TOTAL **\$25,528.07**

Hourly Sales Report

Yesterday (11/06/2020)

All Locations > All Terminals

Lynx Fruit and Veg

Page 2 of 2

Printed 12/06/2020 4:02PM

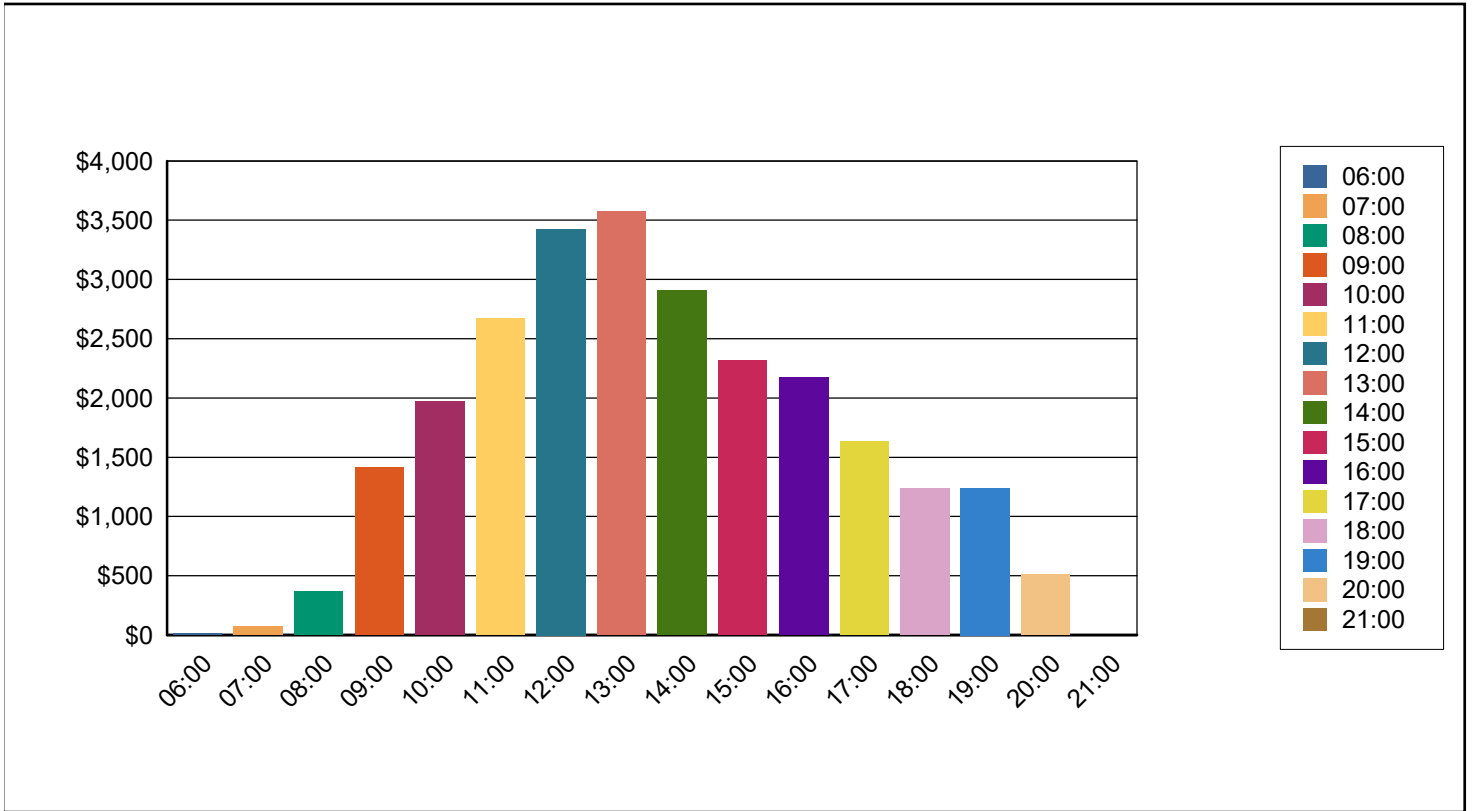
Total

00-14

15-29

30-44

45-59



Clerk Transaction Report

Lynx Fruit and Veg

Month to Date (1/06/2020 - 12/06/2020)

Page 1 of 1

All Locations > All Terminals > Clerk: 1

Printed 12/06/2020 4:03PM

Description	Quantity	Amount	% of Total	Average	Avg/Tran
Clerk # 000-001 TAHLIA					
Tax Amounts					
VAT TAX		\$0.36	100.00%		\$0.00
		\$0.36			
Counts					
NO SALE	265				
Transaction Count	7,512				
	7,777				
Functions					
REFUND	26	-\$105.98	4.69%	-\$4.08	-\$0.01
CORRECTED	1,069	-\$5,822.23	257.69%	-\$5.45	-\$0.80
10% DISCOUNT	6	-\$17.23	0.76%	-\$2.87	\$0.00
30% STAFF DISC	20	-\$121.43	5.37%	-\$6.07	-\$0.02
TRANSACTION VOID	519	\$3,807.50	-168.52%	\$7.34	\$0.53
	1,640	-\$2,259.37			
Media Tendered					
CASH	3,141	\$27,702.60	30.11%	\$8.82	\$3.82
EFTPOS	3,563	\$64,316.66	69.89%	\$18.05	\$8.87
	6,704	\$92,019.26			
Other					
ROUND DIFFER		\$11.12	0.01%		\$0.00
NET SALES		\$92,007.40	99.99%		\$12.70
		\$92,018.52			
Sales Types					
Sales Type 1		\$92,146.42	100.00%		\$12.72
		\$92,146.42			