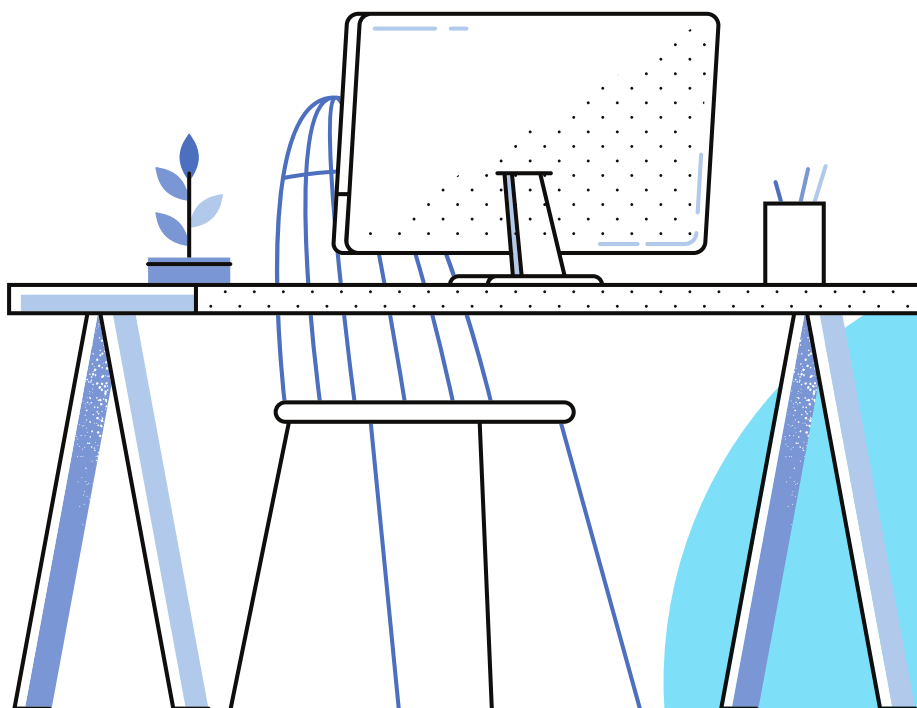


# UNIWELL LYNX

*version 13*



# NEW FEATURES



## NEW REPORT

### Group Sales by Date Report

Lynx Hotel		Group Sales by Date Report					
Last Month (1/05/2022 - 31/05/2022)		Page 1 of 1					
All Locations > All Terminals > All Major Groups > Groups: 8 to 13		Printed 3/06/2022 11:03AM					
Group	Sales						
	Total	BAR MEALS	MISC	COFFEES	CAKES	BREAKFAST	
3/05/2022	-\$5.50	-\$7.00	\$1.50	\$0.00	\$0.00	\$0.00	
13/05/2022	\$53.00	\$0.00	\$0.00	\$41.00	\$5.00	\$7.00	
17/05/2022	\$41.50	\$9.50	\$4.00	\$28.00	\$0.00	\$0.00	
25/05/2022	\$87.00	\$2.00	\$0.00	\$85.00	\$0.00	\$0.00	
Total	\$176.00	\$4.50	\$5.50	\$154.00	\$5.00	\$7.00	

## NEW REPORT OPTIONS

- New colors added to Journal Text Highlight Colors (Blue/Pink/Silver)
- Journal Text Highlight Colors included when creating an Electronic Journal Saved Report
- Multiple texts can be included in the Journal Text Filter on the Electronic Journal report
- Option to filter Item Sales reports by Item Text Filter
- Optional Report Header
- Transactions Voids included in Voids count on KPI reports

## **NEW MODEL SUPPORT**

HX-PI

## **NEW PROGRAMMING**

Report Push Up for Collect Sales

## **DATA MAINTENANCE**

Inactive and Deactivate columns added to Items grid

## **STOCK CONTROL**

Stock Control items can be changed to Non-Stock control items, even if they have stock levels or stock transactional history

## **CUSTOMERS**

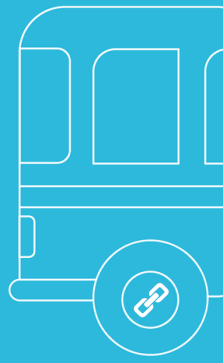
Card and Expiration Date added to Customer listing

## **IMPORT/EXPORT DATA**

Scalable flag added to Import/Export Items



**DON'T GET LEFT** *behind*



# WHY UPGRADE YOUR SOFTWARE?

## 1. IMPROVEMENTS AND NEW FEATURES

Software development is an ongoing process. Our latest versions of software are the result of over 10 years of constant development. We take requests and suggestions from our resellers and end-users. We look at current market trends and future industry directions. We then take all this information and use it to create a range of new features and to improve our current ones. This results in a product that is easier to use and better suited to the needs of businesses. By upgrading your software, you are able to take advantage of these improvements and new features.

## 2. COMPATIBILITY

Older versions of software aren't always compatible with newer POS terminal models and firmware versions, neither are they always compatible with the latest operating systems.

In contrast, the latest version of Uniwell Lynx can be installed on Windows 10 computers and can connect with the newest Uniwell POS terminals. By upgrading your software you can 'future-proof' your POS system.

## 3. SUPPORT

Another reason to consider upgrading is the ability to receive better support. Every Uniwell Lynx version has a support life-cycle that starts when it is initially released and ends when it is no longer supported.

Also, since software features change and improve with every version, it can become difficult for support providers to be able to give the best and quickest advice when the customer is using an old version of software.

Additionally, online support provisions are constantly being developed for the latest software version, such as our support tutorials. They are designed to help you in using your software and getting the most out of it.