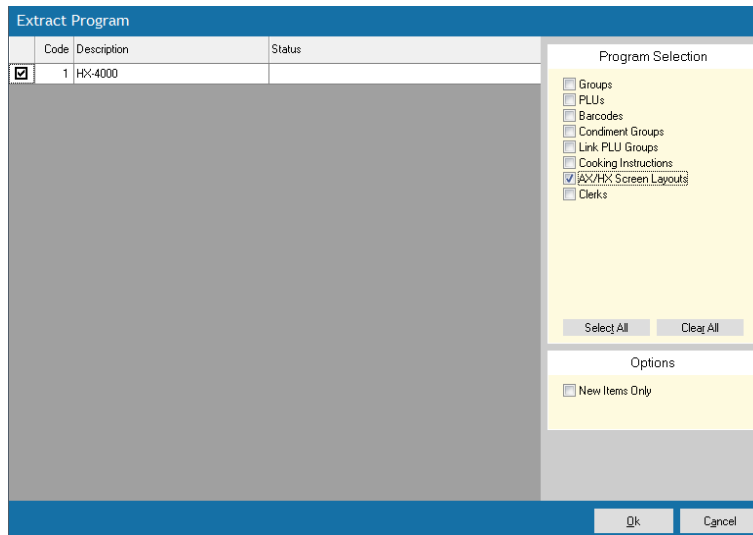


Topic: **AX/HX SCREEN LAYOUT EDITOR**

Uniwell Lynx Lite allows users of Uniwell AX/HX POS terminals to edit their touch screen layout. In order to edit the screen layout it must first be extracted from the terminal.

FAQ How do I extract the screen layout from the terminal?

- *Go to **Communications** > **Extract Program***
- *Select the **AX/HX Screen Layouts** option in the **Program Selection** box*



FAQ How do I edit the screen layout?

- *Go to **Data** > **AX/HX Screen Layouts***
- *Click **Modify***
- ***Hint:** Press **F1** for an explanation of how to use the screen layout editor*

FAQ How do I send the screen layout to the terminal after editing?

- *Go to **Communications** > **Send Program***
- *Select the **Send Screen Layouts** option in the **AX/HX** box*

